

## Acetop Precious Metals

### Operations Manual for Mobile Trading Platform

#### Android Version

- I. Downloading and logging into the mobile trading platform.
- II. The operation and features of the mobile trading platform.
  1. Current Prices
    - (1) Open a trade
    - (2) Open a pending order
  2. Charts
    - (1) Select time intervals
    - (2) Select display method
  3. Transaction Details
    - (1) Market order details
    - (2) Closing a trade
    - (3) Modifying a market order
  4. History (Details of closed trades)
  5. Settings

I. Downloading and logging into the mobile trading platform.

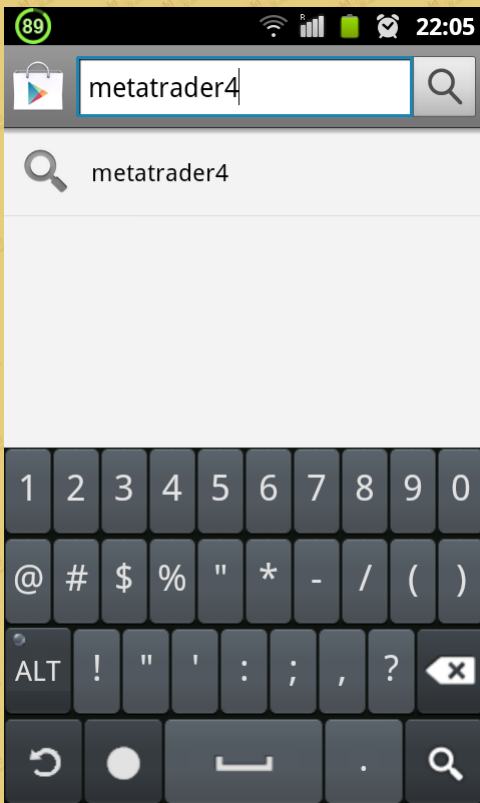
1. To enter the store, click "Play Store" on the main interface of your mobile device.



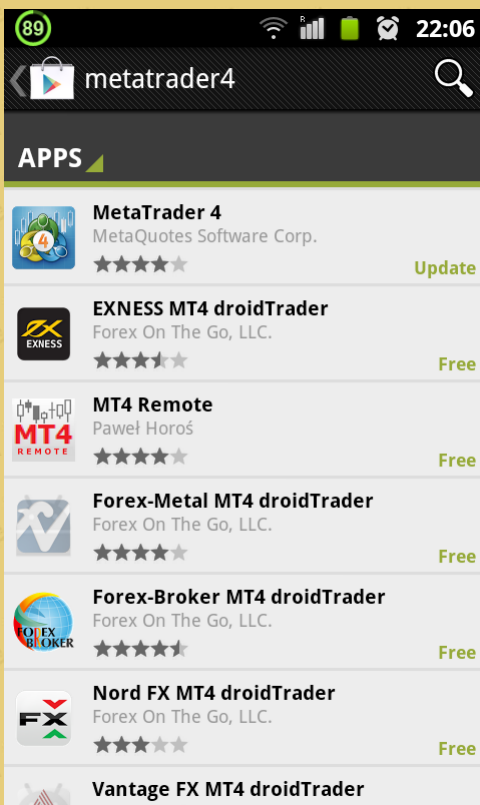
2. Once you are in the "Play Store," click the magnifying glass button in the upper right corner of the screen.



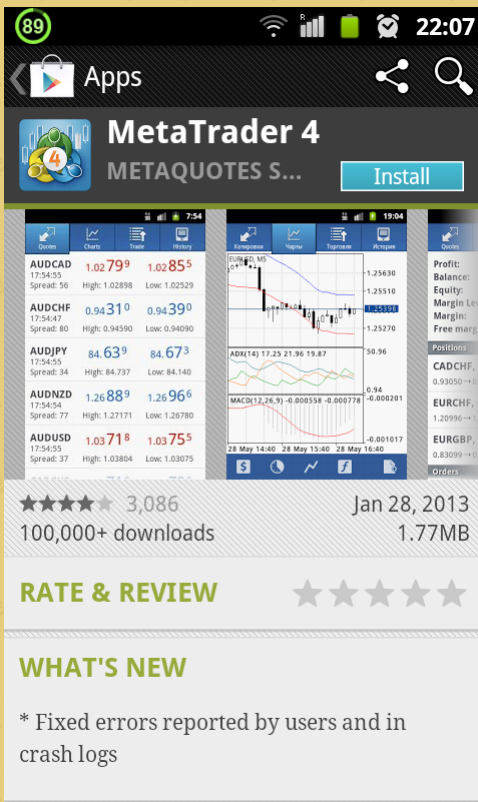
3. Type "Metatrader 4" in the search box, then click again on the magnifying glass button.



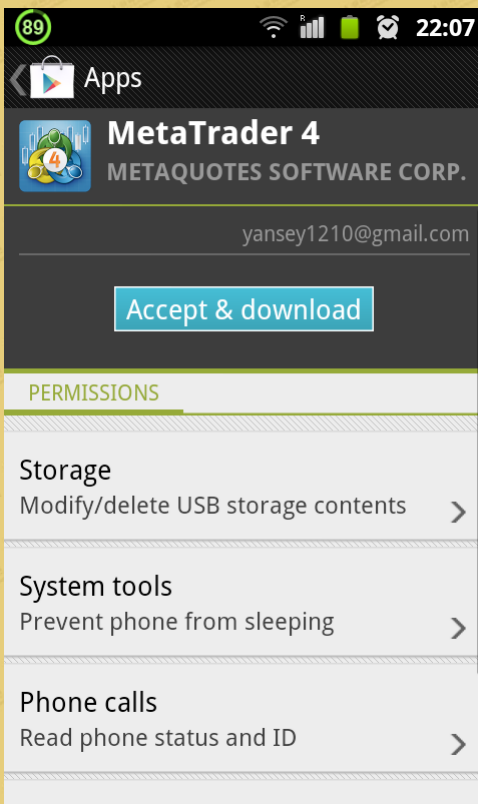
4. Click "Metatrader 4" under the "Application" for downloading setup.



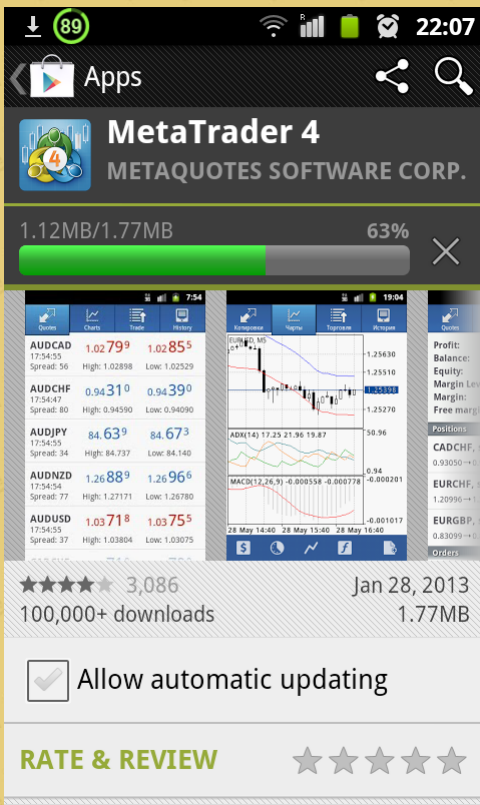
5. Click "Install" to begin the process of installation.



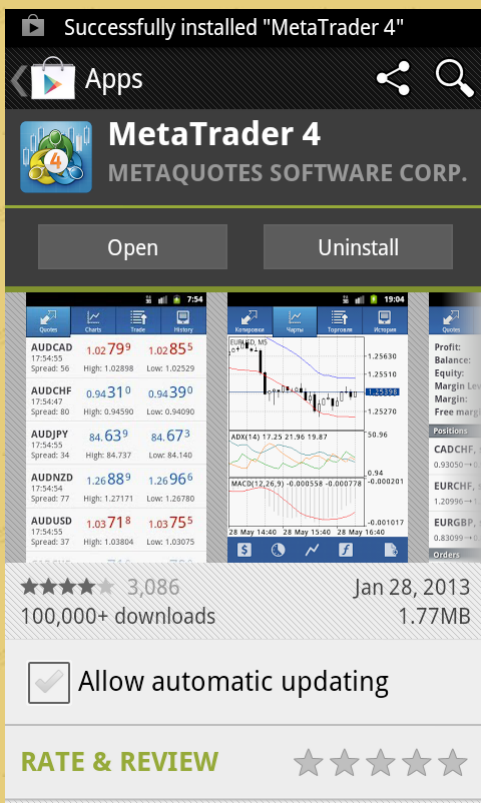
6. Click "Accept and Download."



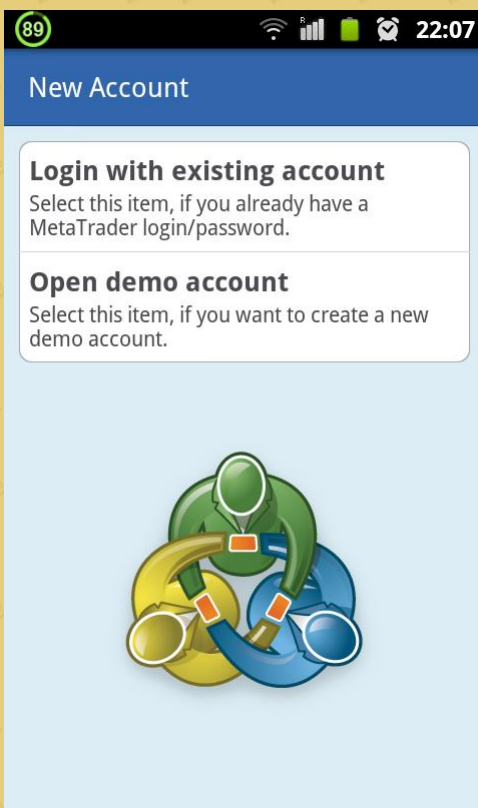
7. Download in progress.



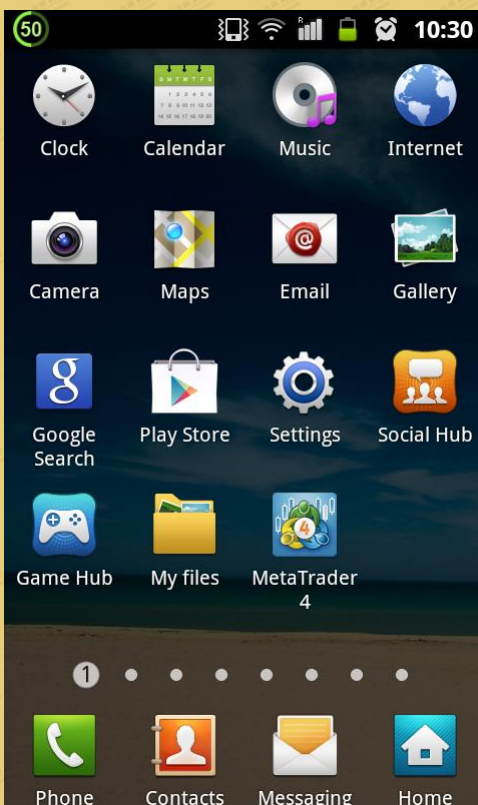
8. (1) After the download and installation has completed, click "Open" to access the login screen.



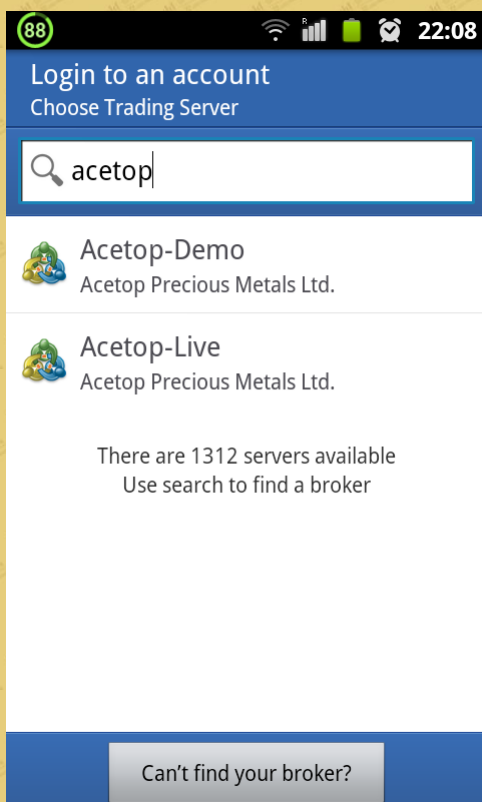
This is what will be displayed on your desktop:



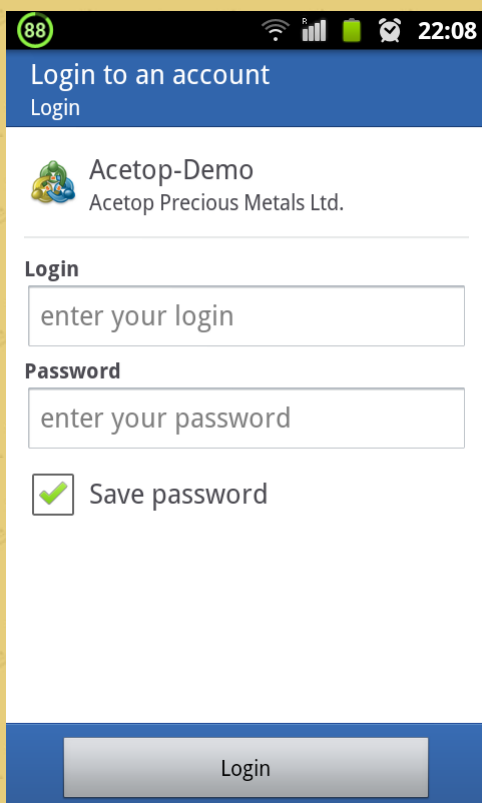
8. (2) Once the download has completed, the "Metatrader 4" icon will display on the desktop. (Note: After initially downloading Metatrader 4 (MT4), you can thereafter just click the MT4 icon on your desktop to gain direct access to the login screen.)



9. Type “Acetop” in the search box, select the appropriate server for which to login to your account.



10. Enter the correct account number and password.



## II. The operation and features of the mobile phone trading platform:

The primary fields covered in the software are as follows:

1. Current Prices
2. Charts
3. Transaction Details
4. History

The operation and features of each field are as follows:

### 1. Current Prices

#### (1) Open a trade

a. Here, you can see a variety of products offered through [igoldhk.com](http://igoldhk.com), such as GOLD and SILVER. It also shows real-time price quotations. There are two ways to instigate a "New Order."

Method 1: click the feature button at the lower left corner of the screen, then click "New Order" (see Figure 1).

Method 2: Click on "GOLD" or "SILVER," the "New Order" button will appear on the screen (see Figure 2).



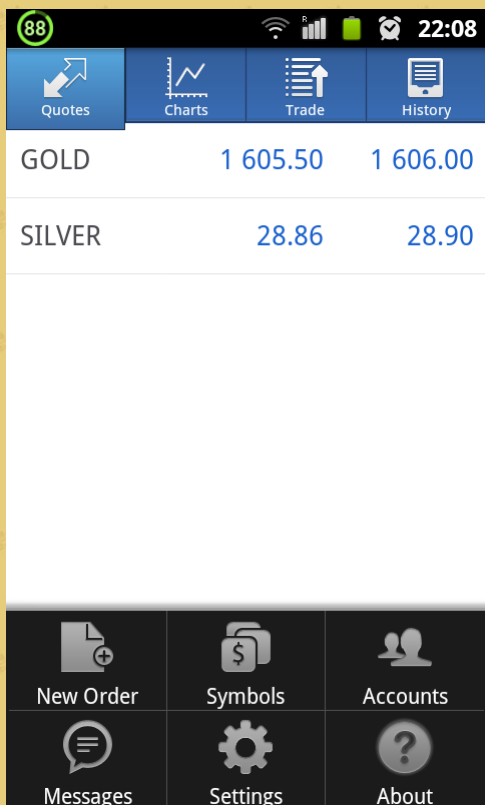


Figure 1

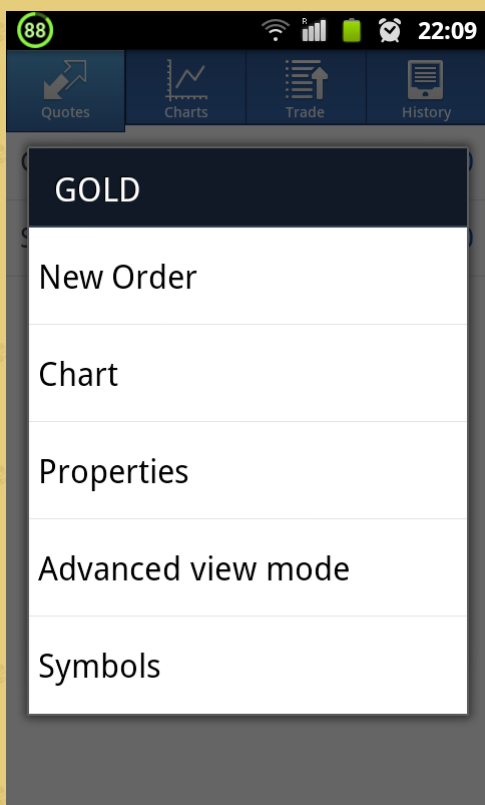
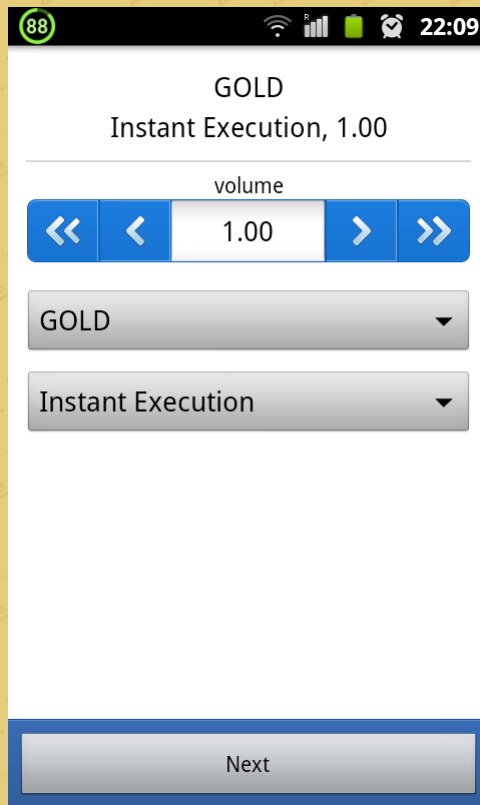
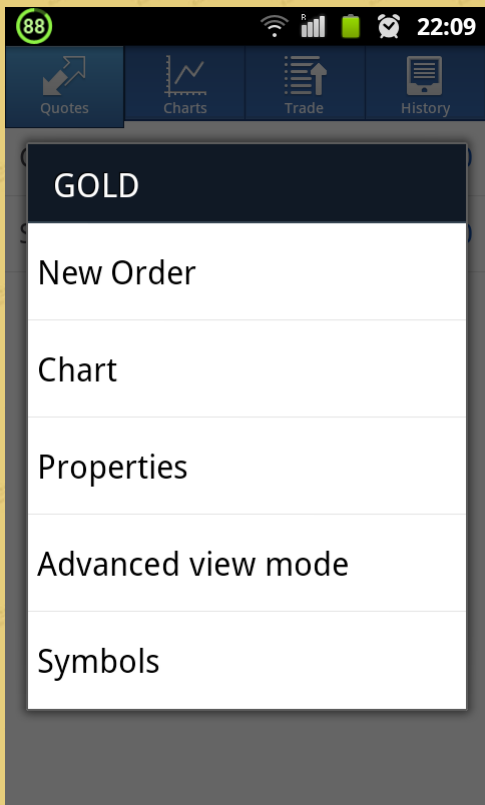
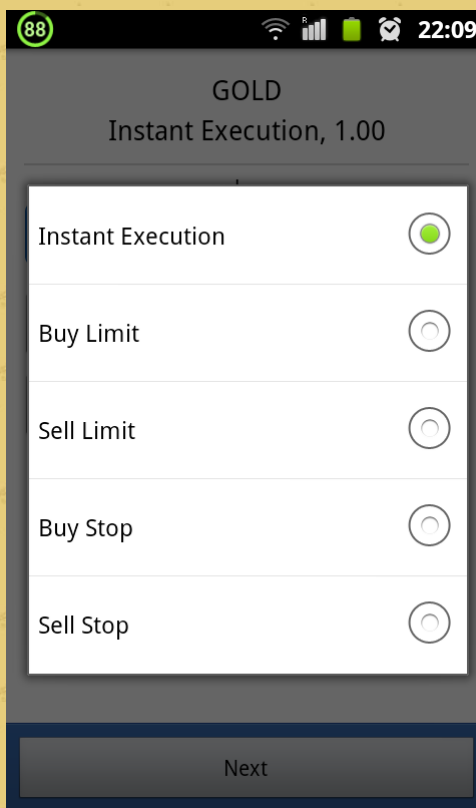
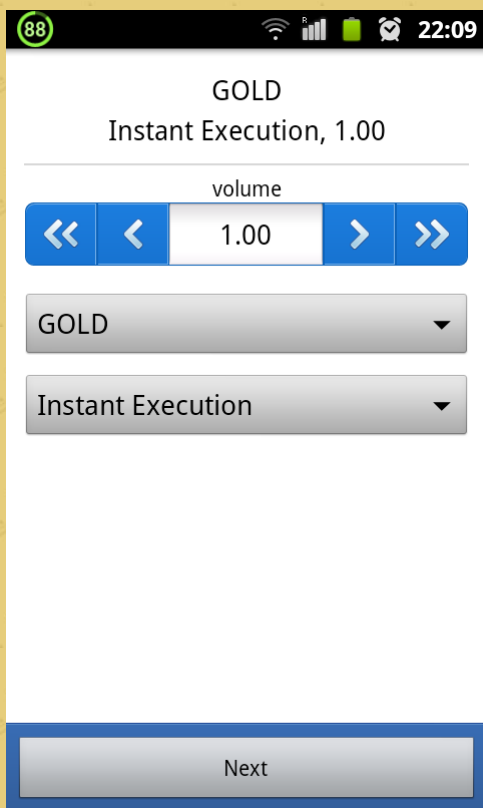


Figure 2





b. After clicking “New Order,” you may instantly begin trading.



You can also select four different types of pending order: Buy Limit Order, Sell Limit Order, Buy Stop Order, and Sell Stop Order. (Note: You can select the lot size and the products from the circled areas.)



c. Once the order type and the lot size are selected, you can choose to click the "Next" button to set risk management, including "Stop Loss" and "Take Profits." Then click on "Sell" or "Buy" to confirm your order.

88     22:10

GOLD  
Instant Execution, 1.00

**1605.80**      **1606.30**

---

Stop Loss	Take Profit
<input type="text" value="0.00"/>	<input type="text" value="0.00"/>

Deviation

d. Once confirmed, the system completes the transaction. After the trade has been successfully transacted, click "Finish." A detailed market order will appear on the screen.

88 22:10

**GOLD**  
Instant Execution

---

Order is open

#1160144  
buy 1.00 GOLD at 1 606.29  
sl: 0.00 tp: 0.00

Copy to Clipboard

Done

88 22:10

Quotes Charts Trade History

**Profit:** 214.00  
**Balance:** 324 436.04  
**Equity:** 324 650.04  
**Margin Level (%):** 10821.67  
**Margin:** 3 000.00  
**Free margin:** 321 650.04

**Positions**

<b>GOLD, buy 1.00</b> 1 604.19 → 1 605.59	<b>140.00</b>
<b>GOLD, buy 1.00</b> 1 604.15 → 1 605.59	<b>144.00</b>
<b>GOLD, buy 1.00</b> 1 606.29 → 1 605.59	<b>-70.00</b>

**Orders**

<b>GOLD, buy limit</b> 1.00 at 1 580.00	<b>1 606.09</b>
--	-----------------

(2) Open a pending order

a. The types of product, the types of pending order, and the lot sizes are displayed at the top of the screen. They are further categorized as such:

- Pending Order Price
  - Stop Price
  - Take-Profit Price
- Pending order expiration

You are required to fill in the Pending Order price. Others can be set as needed. After the prices are set, click the blue "Place" button at the bottom of the screen. When the order has been successfully placed, the screen will display, "Completed."

The screenshot shows a mobile application interface for placing a pending order. At the top, there is a status bar with a signal strength indicator, Wi-Fi, battery, and the time 22:11. Below the status bar, the word "Price:" is displayed above a text input field containing "1600.00". Underneath, there are two input fields: "Stop Loss" with "1580.00" and "Take Profit" with "1620.00". Below these is a dropdown menu for "Expiration" set to "GTC". At the bottom, there is a numeric keypad with buttons for left and right arrow keys, a down arrow, an up arrow, and a grid of numbers 1-9, 0, and a "DEL" button with a back arrow and an 'x'.

87 22:11

GOLD  
Buy Limit, 1.00

1605.40 1605.90

Price:

1600.00

Stop Loss      Take Profit

1580.00      1620.00

Expiration

GTC

Place

87 22:12

GOLD  
Buy Limit

Order is open

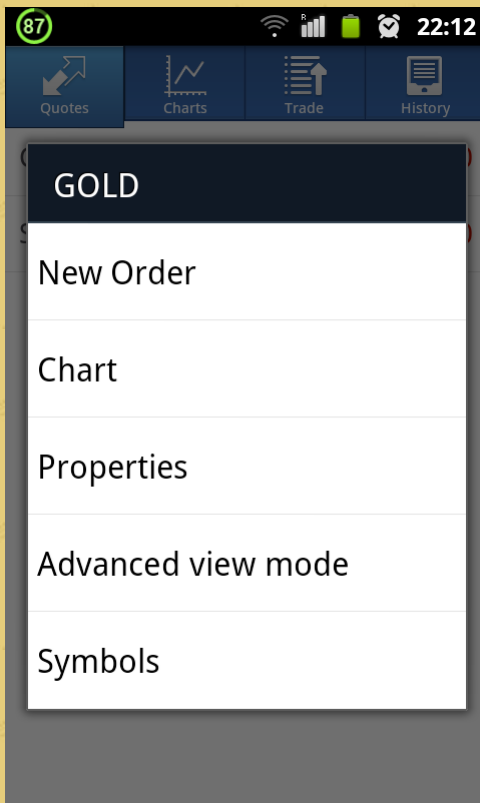
#1160173  
buy limit 1.00 GOLD at 1 600.00  
sl: 1 580.00 tp: 1 620.00

Copy to Clipboard

Done

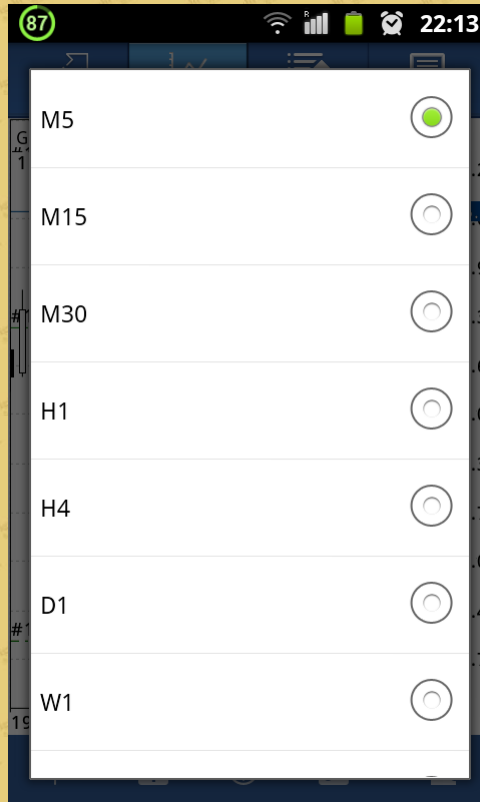
## 2. Charts

To view charts, click the "Charts" at the top of the screen. (Note: click on the first icon at the lower left corner of the chart and you can start selecting the products that you want to trade.)





(1) In "Charts," you have 7 different time intervals (M1, M5, M15, M30, H1, H4,D1) to set the timeframe according to your preference.



(2) If you click on the third icon below the chart, there will be three different charts from which to choose: a bar chart, a candlestick chart, and a line chart.



Settings

Quotes

**Advanced mode**  
In the advanced mode, the quotes window contains spreads, time data, as well as High and Low prices.

Charts

**Line type**  
Candlestick

**OHLC**  
Displays open, high, low and close prices on chart for the last candle or for candle pointed with crosshair.

**Data window**  
Displays a pop-up window near the crosshair. This window shows indicator values on the specified bar.

**Show volumes**  
Enable this option to display volumes on charts.

Settings

Quotes

Advanced mode

**Line type**

Bar chart

Candlestick

Line chart

Cancel

crosshair. This window shows indicator values on the specified bar.

**Show volumes**  
Enable this option to display volumes

(3) A. Click the button "f" on the chart for a list of the technical indicators. Click open the list to select the desired indicator, then set the "Properties" such as the thickness of the lines and line color.



86 22:14

Indicators

- Trend
- Oscillators
- Volumes
- Accumulation/Distribution
- Money Flow Index
- On Balance Volume
- Volumes

86 22:15

MACD

Fast EMA:	12
Slow EMA:	26
MACD SMA:	9

Apply to  
Close

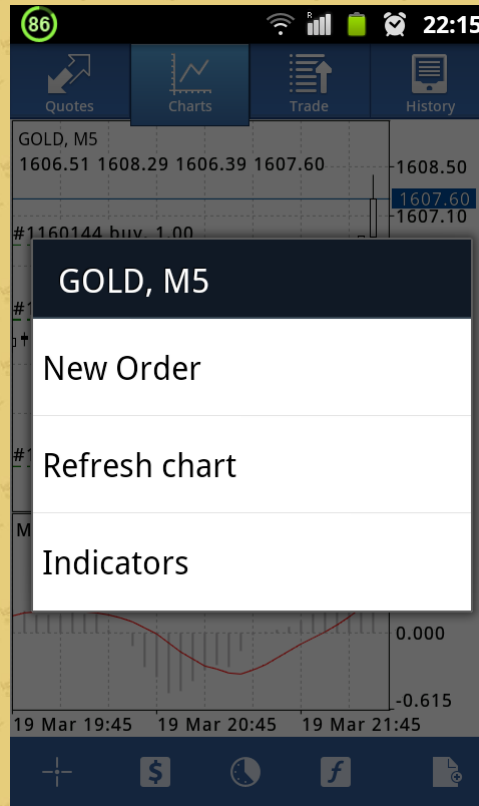
Styles

Main

Signal

Done Cancel

B. The following is a chart for the technical indicators. You can set up your chart with multiple indicators. Click anywhere in the area of the indicator and a popup menu appears. Select "Indicators" to enter the indicator list.



86 22:15

Indicators on GOLD, M5

- Main chart +
- Indicator window 1 +
- MACD

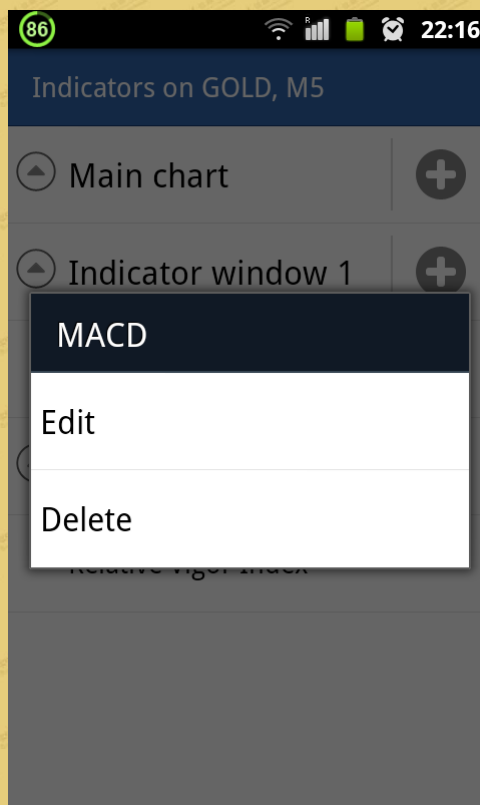
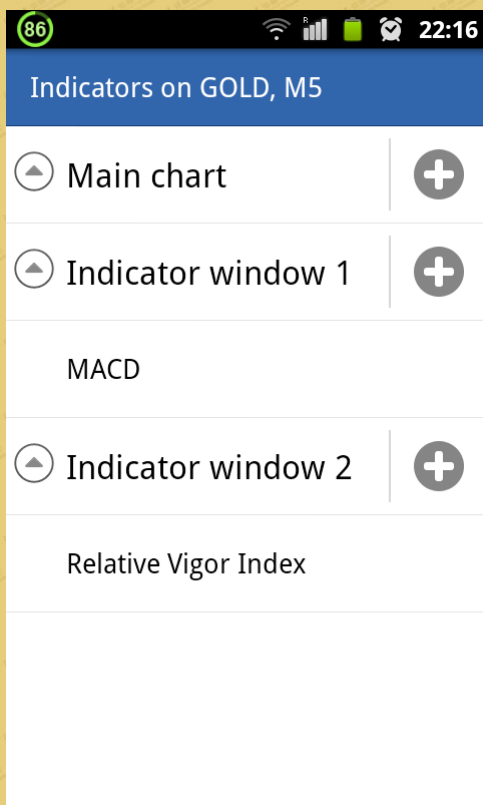
C. Set the number of technical indicators according to your preference.



Indicators on GOLD, M5

- Main chart +
- Indicator window 1 +
- MACD
- Indicator window 2 +
- Relative Vigor Index

D. To delete or modify the technical indicators, click open the indicator list, press on the indicator icon and hold for a few seconds, then set according to preference and needs.





### 3. Transaction Details

(1) After you click the "Trade" on the top of the screen, you will see information regarding the trade order. Click the ticket below to see all the details of the transactions.

86
22:17

<b>Profit:</b>	712.00
<b>Balance:</b>	324 436.04
<b>Equity:</b>	325 148.04
<b>Margin Level (%):</b>	10838.27
<b>Margin:</b>	3 000.00
<b>Free margin:</b>	322 148.04

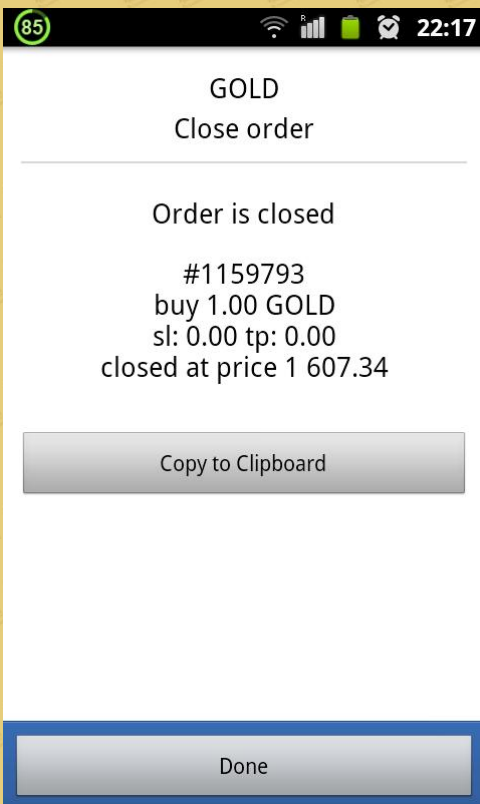
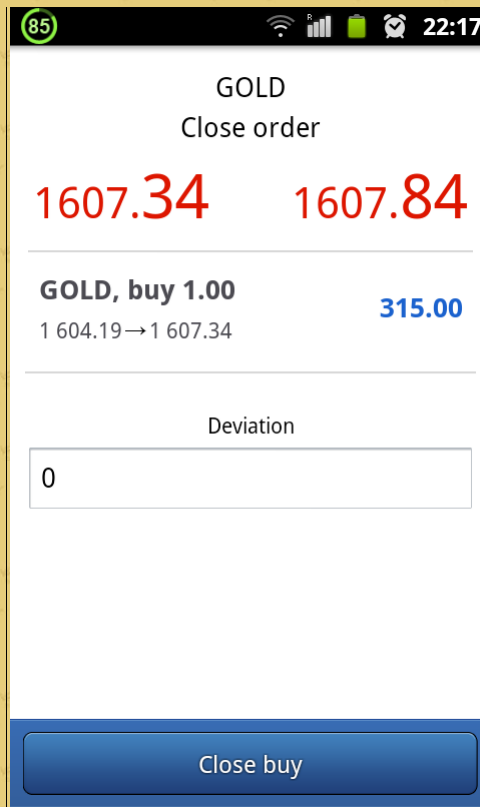
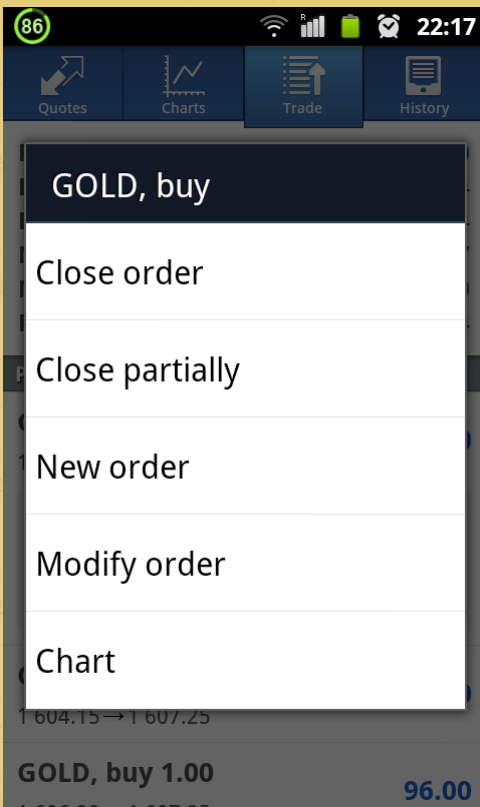
**Positions**

<b>GOLD, buy 1.00</b>	<b>306.00</b>
1 604.19 → 1 607.25	
2013.03.19 21:48	
<b>S/L:</b> 0.00	<b>Swap:</b> 0.00
<b>T/P:</b> 0.00	<b>Taxes:</b> 0.00
<b>ID:</b> 1159793	<b>Charges:</b> 0.00

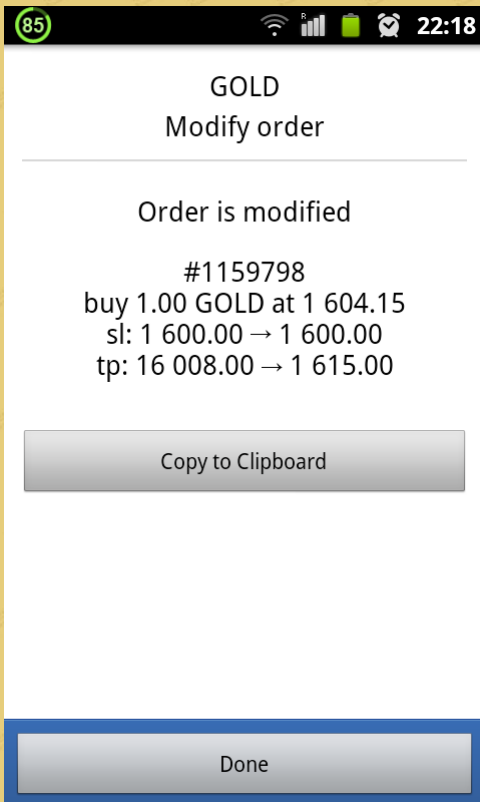
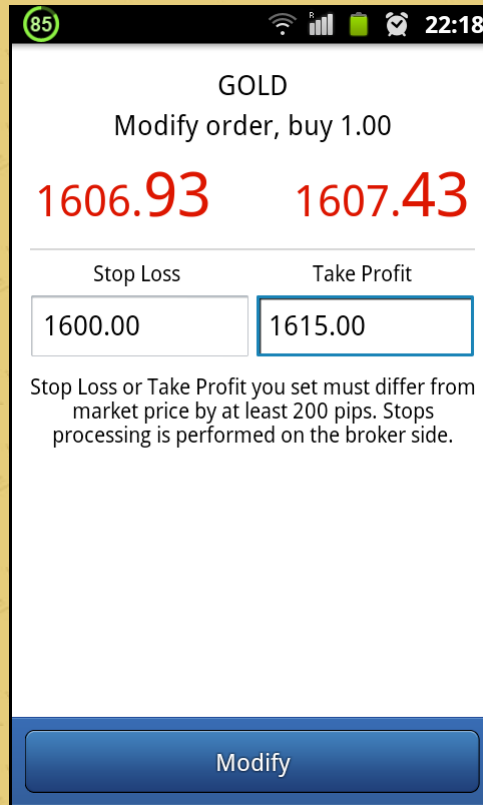
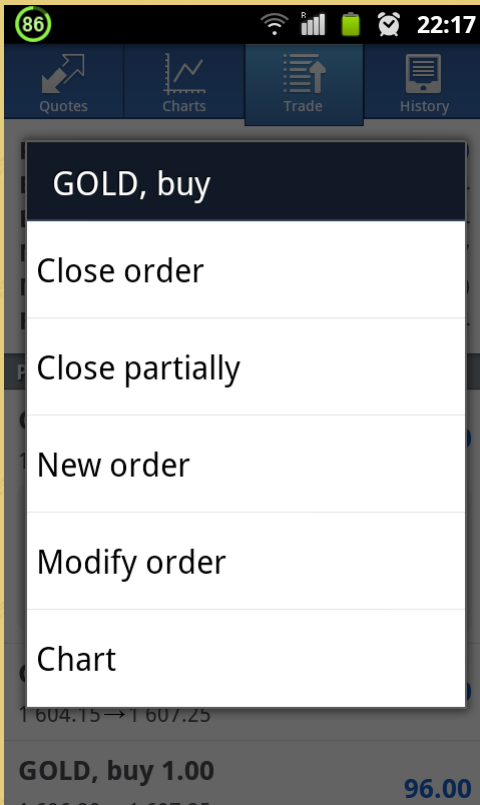
<b>GOLD, buy 1.00</b>	<b>310.00</b>
1 604.15 → 1 607.25	

<b>GOLD, buy 1.00</b>	<b>96.00</b>
1 606.00 → 1 607.25	

(2) To close an order, follow these steps:



(3) To modify an order, follow these steps:



#### 4. History(Details of closed trades)

##### (1)History report of closed orders.

85 22:18

Quotes Charts Trade History

**Profit:** 374.00  
**Balance:** 324 751.04  
**Equity:** 325 125.04  
**Margin Level (%):** 16256.25  
**Margin:** 2 000.00  
**Free margin:** 323 125.04

**Positions**

**GOLD, buy 1.00** 294.00  
 1 604.15 → 1 607.09

2013.03.19 21:48

S/L: 1 600.00 Swap: 0.00  
 T/P: 1 615.00 Taxes: 0.00  
 ID: 1159798 Charges: 0.00

**GOLD, buy 1.00** 80.00  
 1 606.29 → 1 607.09

**Orders**

**GOLD, buy limit**

85 22:18

Quotes Charts Trade History

Enter symbol name

Today 2013.03.19

Last week 2013.03.12 - 2013.03.19

Last month 2013.02.01 - 2013.03.19

Last 3 months 2012.12.01 - 2013.03.19

Custom

**GOLD, buy 1.00** 2013.03.19 21:48

**GOLD, sell 1.00** 2013.03.19 18:12  
 1 605.74 → 1 602.05 369.00

85 22:19

Quotes Charts Trade History

Enter symbol name

**GOLD, buy limit** 2013.03.15 19:35  
 1.00 at 1 590.00

**GOLD, buy 1.00** 2013.03.15 15:22  
 1 594.35 → 1 593.80 -55.00

**GOLD, buy limit** 2013.03.15 15:22  
 1.00 at 1 500.00

**GOLD, sell 1.00** 2013.03.15 15:17  
 1 593.60 → 1 594.20 -60.00

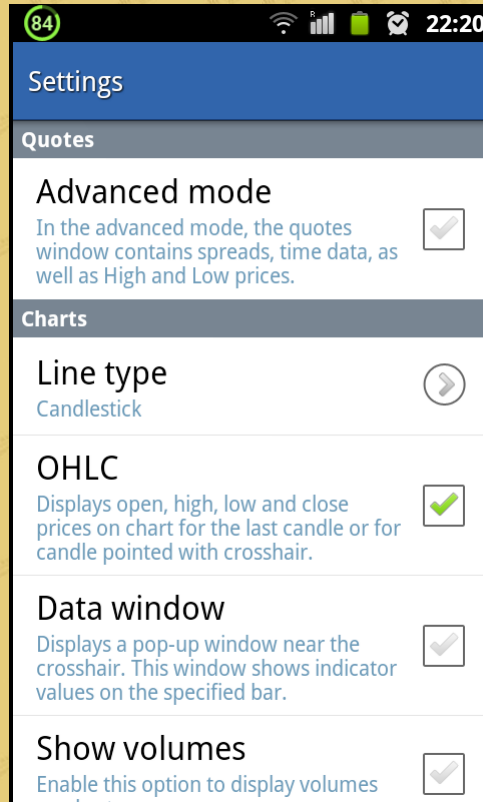
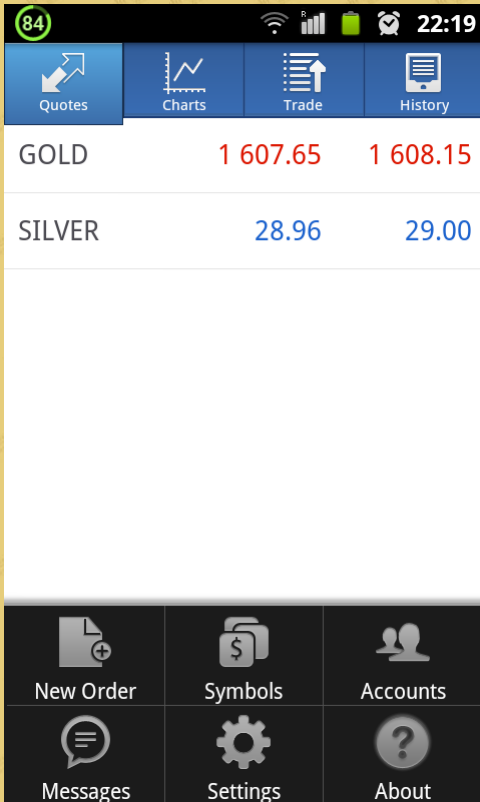
**GOLD, sell 1.00** 2013.03.15 15:16  
 1 593.70 → 1 594.45 -75.00

**GOLD, buy 1.00** 2013.03.15 14:39  
 1 592.76 → 1 592.26 -50.00

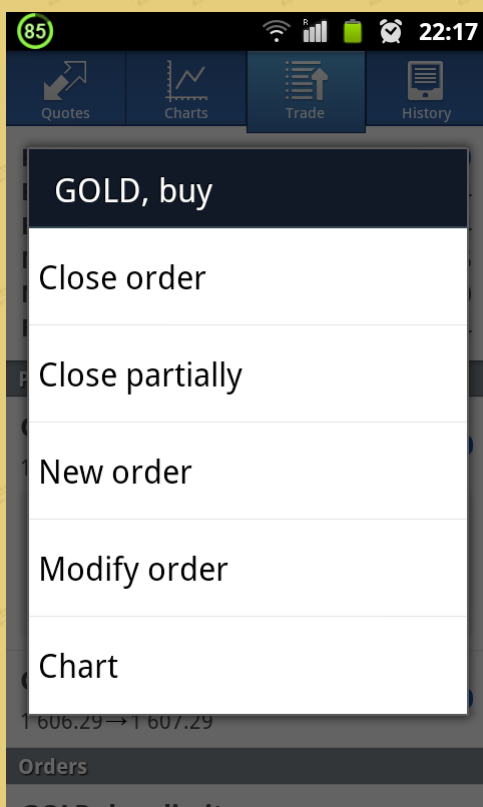
**GOLD, buy limit** 2013.03.13 11:40

## 5. Settings

(1) Displays the settings for the quotes and charts.



(2) Click "Properties" to view the details of the product.



84

GOLD	
Spread:	50
Digits:	2
Stop levels:	200
Pending orders GTC:	Yes
Contract size:	100
Profit calculation mode:	CFD
Swap type:	In percentage terms
Swap long:	-1.25
Swap short:	-0.75
Margin calculation:	CFD
Initial margin:	1000.00